

IN THE COMMISSIONERS' COURT
Of
MEDINA COUNTY, TEXAS

ESTABLISHMENT OF PLANS AND SPECIFICATIONS FOR A STANDARD CATTLE
GUARD TO BE USED
ON COUNTY ROADS WITHIN MEDINA COUNTY, TEXAS

WHEREAS, §251.003 (a)(1) of the Texas Transportation Code grants the Medina County Commissioners Court the authority to make and enforce all necessary rules and orders for the construction and maintenance of public roads; and

WHEREAS, cattle guards currently exist on County maintained roads; and

WHEREAS, Medina County anticipates requests from a property owner proposing to construct new cattle guards on an existing County maintained road; and

WHEREAS, Texas Transportation Code §251.009 (a) states that the Medina County Commissioners' Court may authorize the construction of a cattle guards on a county road of any class; and

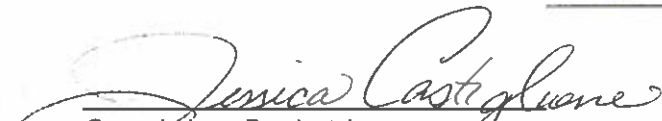
WHEREAS, §251.009 (b) of the Texas Transportation Code requires that the Medina County Commissioners' Court establish plans and specifications for a standard cattle guard to be used on the county roads;

NOW, THEREFORE, IT IS ORDERED BY THE COMMISSIONERS' COURT OF MEDINA COUNTY, that the specifications herein attached, shall serve as the standard for construction of cattle guards on County maintained roads.

Approved, this 27th day of November, 2023 by the Medina County Commissioners' Court.



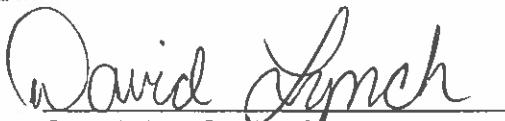
County Judge



Commissioner Precinct 1



Commissioner Precinct 2



Commissioner Precinct 3



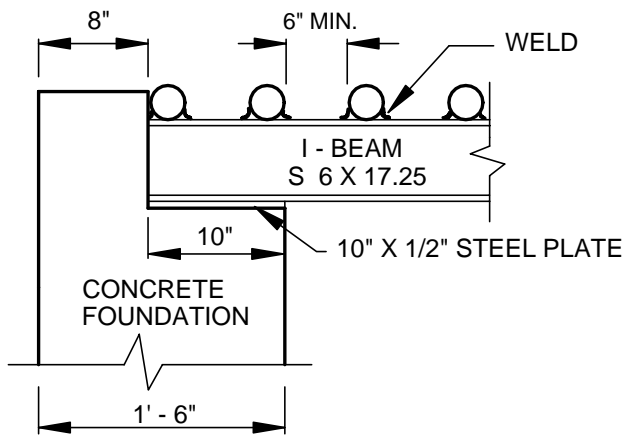
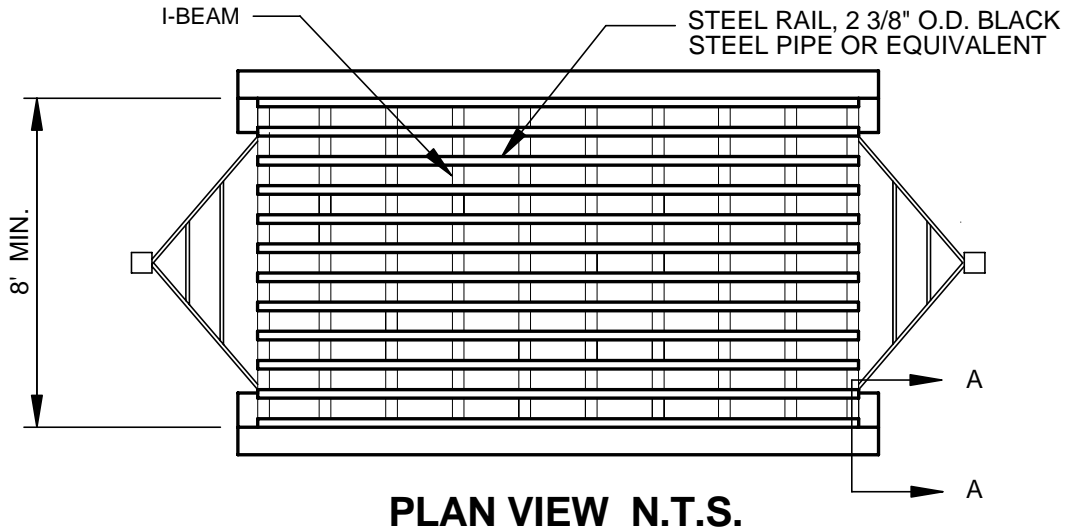
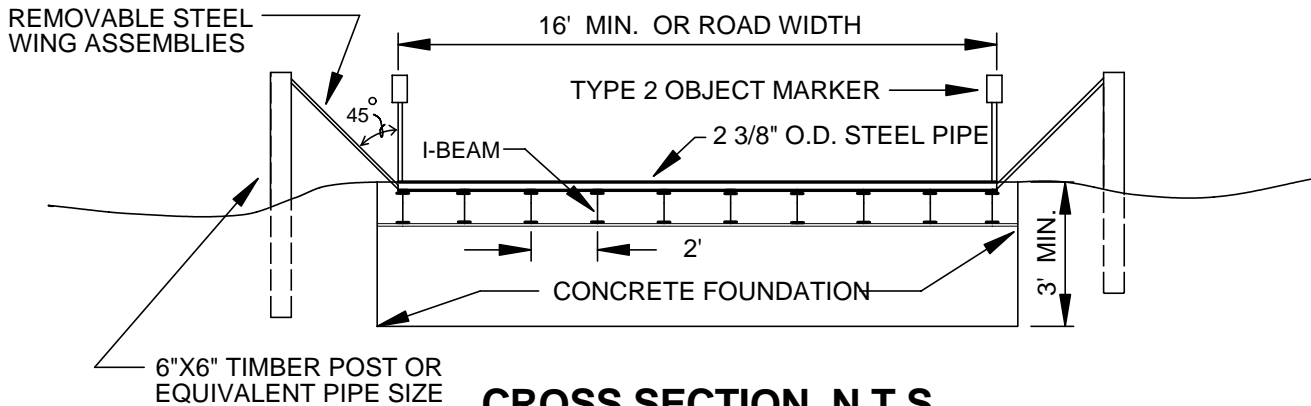


Commissioner Precinct 4

SPECIFICATIONS:

All cattle guards shall be at least the width of the roadway, but not less than sixteen (16) feet wide, and eight (8) feet in length measured along the center of the road. (See Figure 1 – Details) All cattle guards in subdivisions must be 20 feet wide and supported with a minimum of eight I-beams 4" wide and 12" deep with a web and flange of minimum 3/8" thickness.

MEDINA COUNTY CATTLE GUARD



NOTES:

1. CONCRETE CLASS "A" SHALL MEET ALL THE REQUIREMENTS AS SET FOURTH IN ASTM C-94.
2. ALL STRUCTURAL STEEL SHALL MEET THE REQUIREMENTS AS SET FOURTH IN ASTM A-36.
3. ALL BLACK STANDARD STEEL PIPE SHALL MEET REQUIREMENTS AS SET FOURTH IN ASTM A-53.
4. ALL I-BEAM SPACING SHALL BE TWO FEET MEASURED CENTER TO CENTER.
5. STEEL RAIL OR STEEL BLACK PIPE SPACING SHALL BE A MINIMUM OF SIX INCHES.
6. WING ASSEMBLIES SHALL BE REMOVABLE.
7. IF SOLID ROCK IS ENCOUNTERED, IT IS THE PRECINCT COMMISSIONER'S DISCRETION TO REDUCE THE CONCRETE FOUNDATION TO NO LESS THAN 2' FROM TOP OF CATTLE GUARD.
8. SIDE GATE SHALL BE A MINIMUM OF 12' AND TO BE INSTALLED BY PROPERTY OWNER.

FIGURE 1